

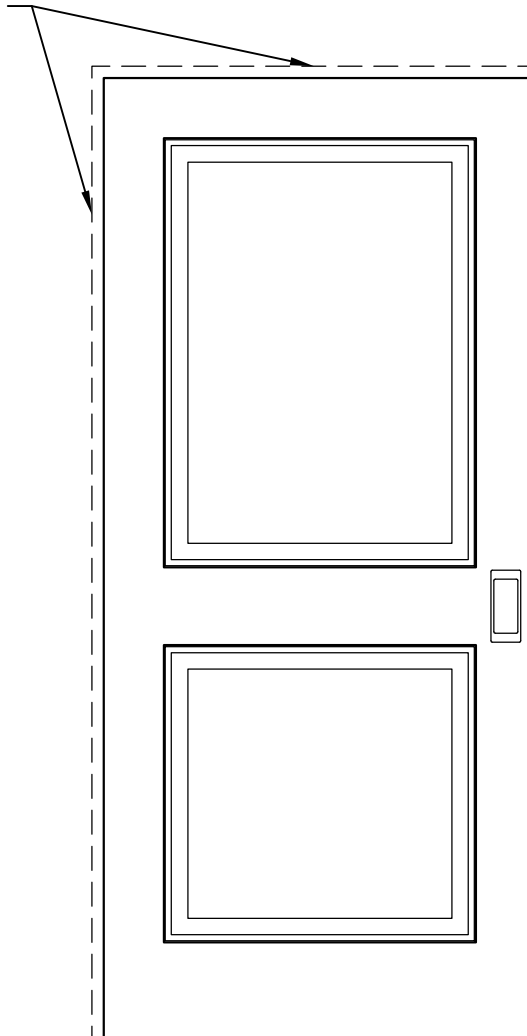


UPSTATE DOOR
FINE DOOR SOLUTIONS... ONE SOURCE

Pocket Door Adder

Scale: 3/4" = 1'-0"

1" ADDED TO TOP
AND ONE STILE



For more assistance, please contact one of our customer service representatives

1-800-570-8283

sales@upstatedoor.com

www.upstatedoor.com

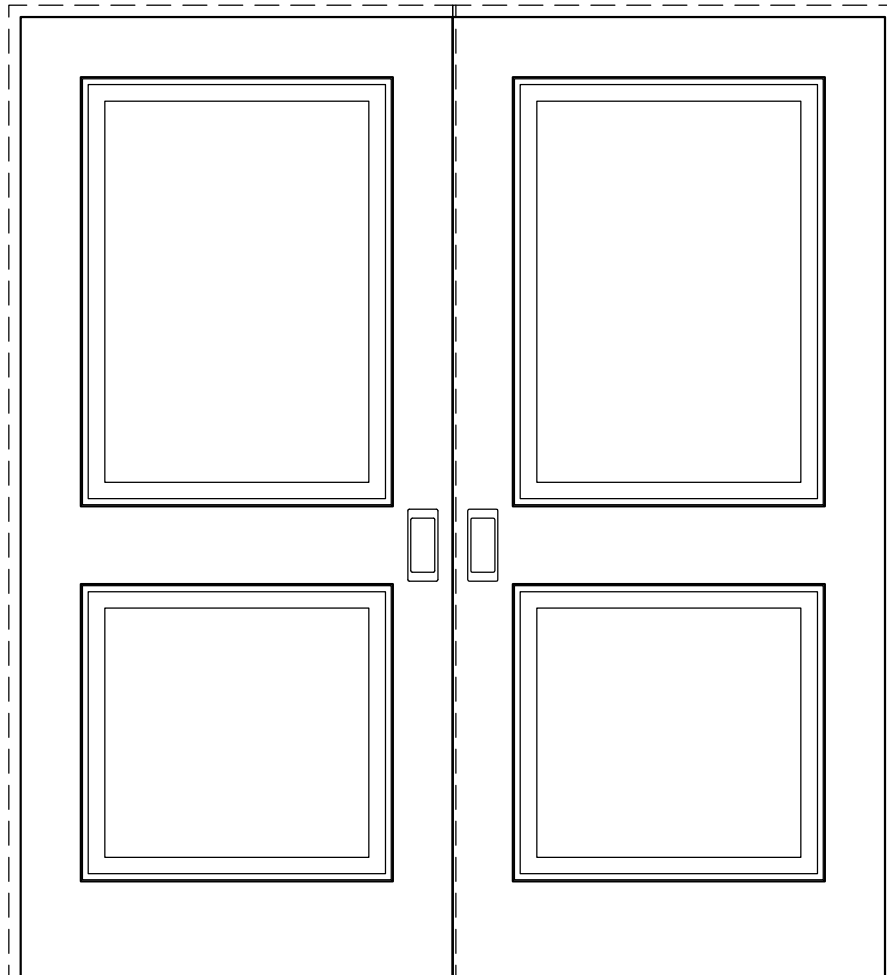


UPSTATE DOOR

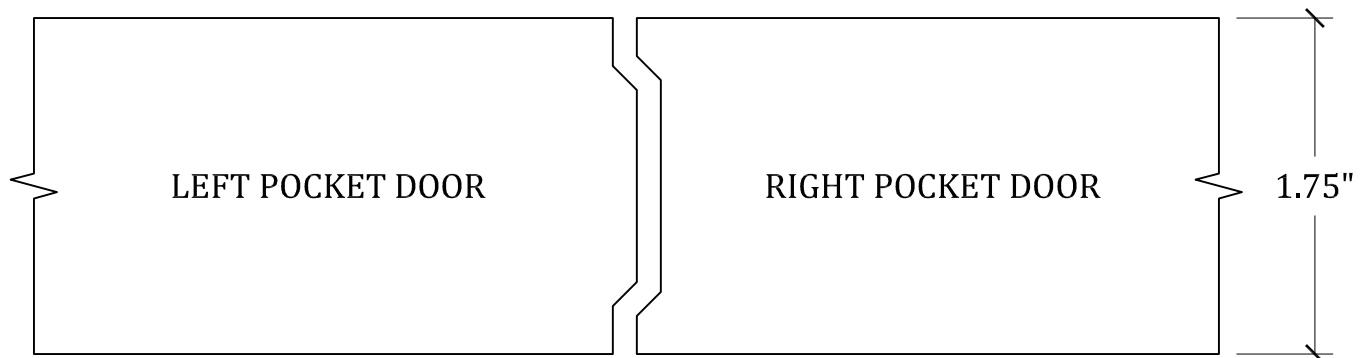
FINE DOOR SOLUTIONS... ONE SOURCE

Pocket Door Meeting Stiles

Scale: 3/4" = 1'-0"



Scale: FULL



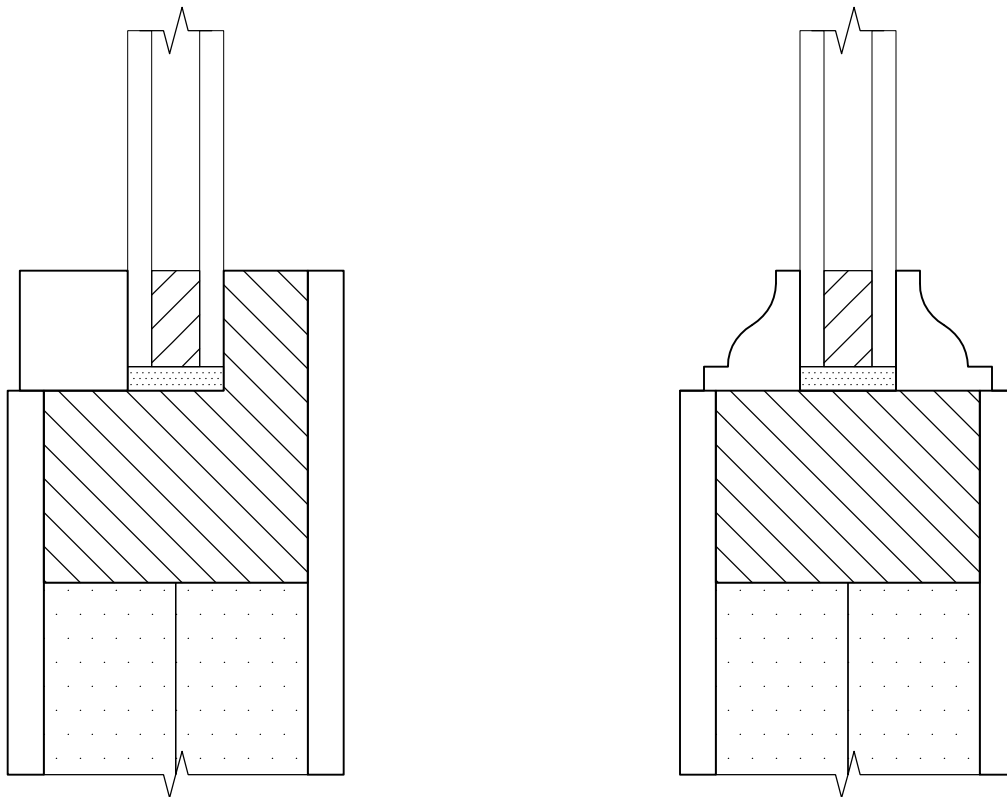
DETAIL: DOOR @ MEETING STILE
UPSTATE OPTIONAL POCKET DOOR MEETING STILES

For more assistance, please contact one of our customer service representatives
1-800-570-8283 sales@upstatedoor.com www.upstatedoor.com



UPSTATE DOOR
FINE DOOR SOLUTIONS... ONE SOURCE

Porthole
Scale: FULL



DETAIL: DOOR @ PORTHOLE
UPSTATE STANDARD PORTHOLE

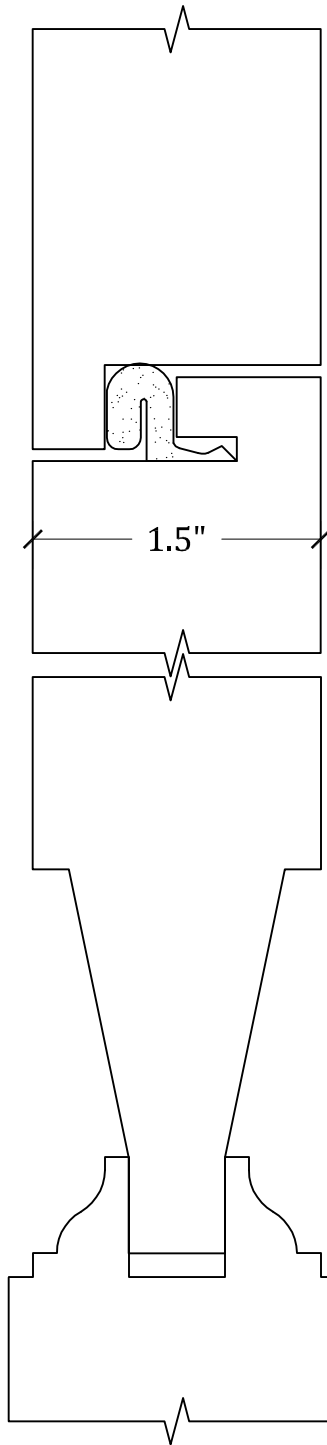


UPSTATE DOOR®

FINE DOOR SOLUTIONS... ONE SOURCE

Speakeasy

Scale: *FULL*



DETAIL: DOOR @ SPEAKEASY

UPSTATE STANDARD SPEAKEASY with
COMPRESSION WEATHER-STRIPPING

For more assistance, please contact one of our customer service representatives
1-800-570-8283 sales@upstatedoor.com www.upstatedoor.com

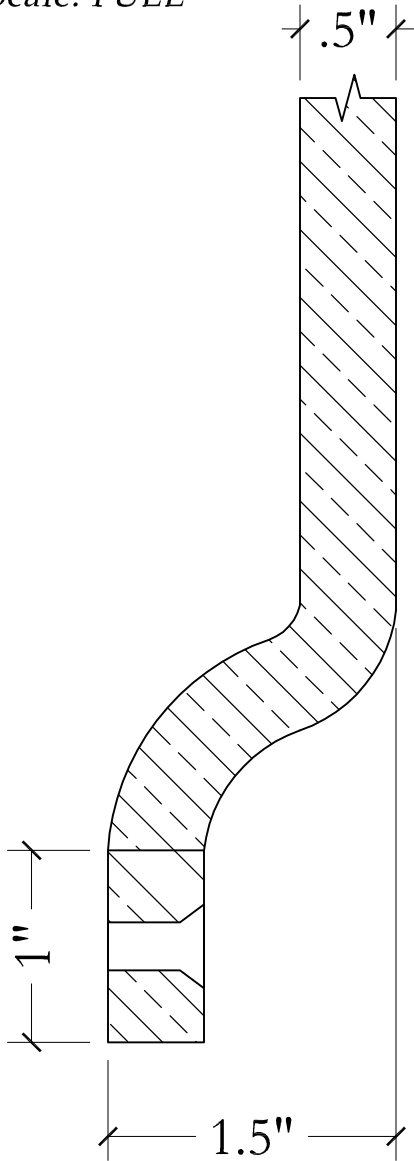


UPSTATE DOOR

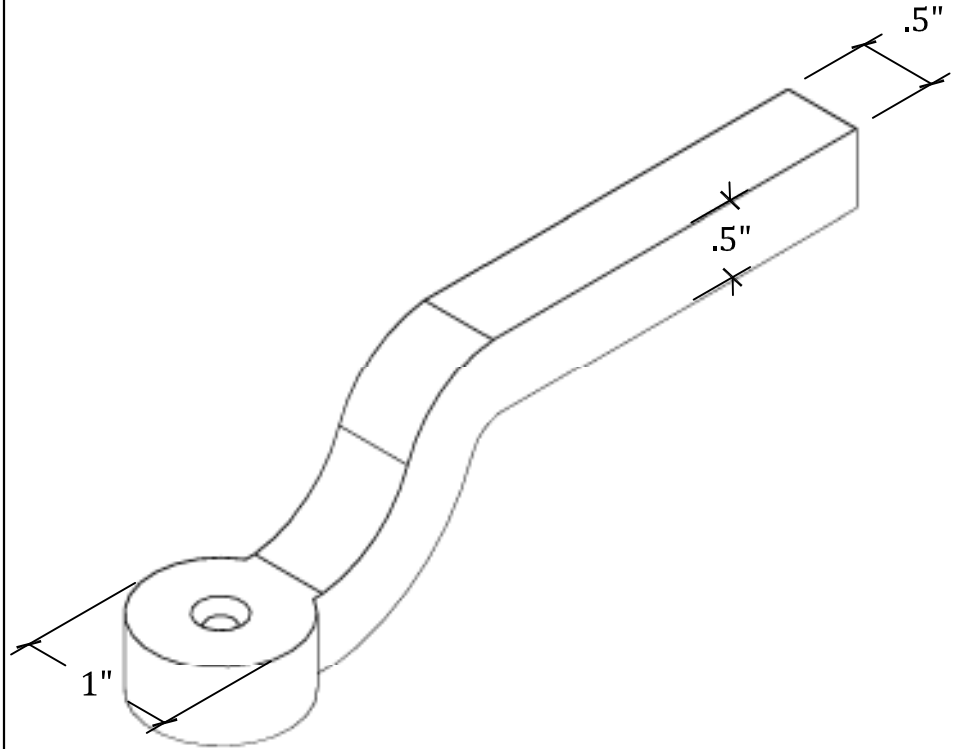
FINE DOOR SOLUTIONS... ONE SOURCE

Wrought Iron

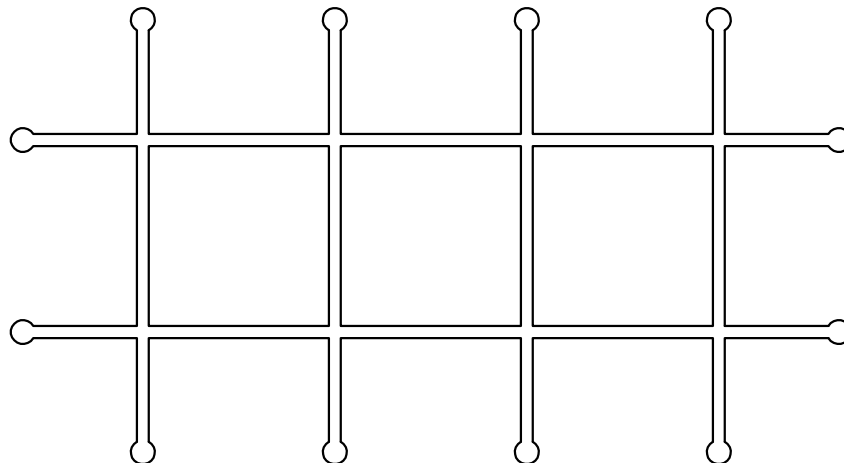
Scale: FULL



Scale: FULL



Scale: 1 1/2"=1'-0"



For more assistance, please contact one of our customer service representatives
1-800-570-8283 sales@upstatedoor.com www.upstatedoor.com



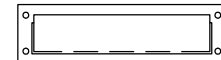
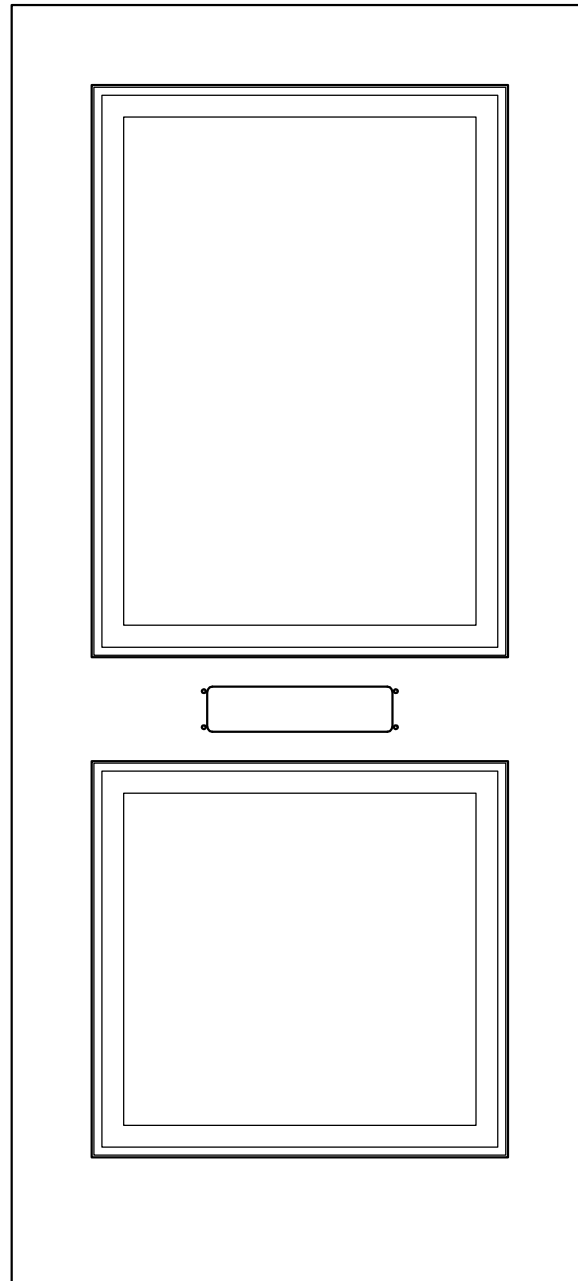
APPLIED TO STILE/RAILS OR PANELS

For more assistance, please contact one of our customer service representatives
1-800-570-8283 sales@upstatedoor.com www.upstatedoor.com



UPSTATE DOOR
FINE DOOR SOLUTIONS... ONE SOURCE

Mail Slot
Scale: 1" = 1'-0"



MACHINING FOR MAIL SLOT PER
TEMPLATE FOR SPECIFIED HARDWARE

For more assistance, please contact one of our customer service representatives
1-800-570-8283 sales@upstatedoor.com www.upstatedoor.com

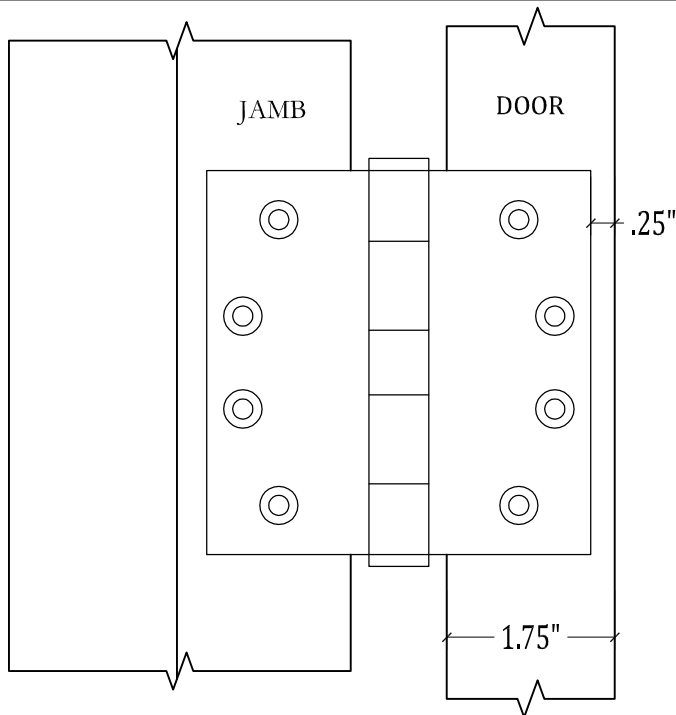


UPSTATE DOOR

FINE DOOR SOLUTIONS... ONE SOURCE

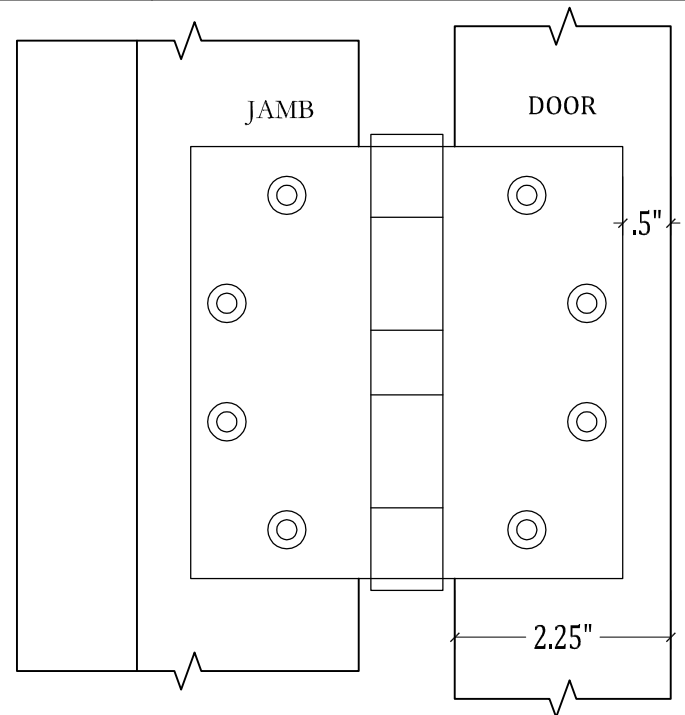
Standard Hinge Backsets

Scale: HALF



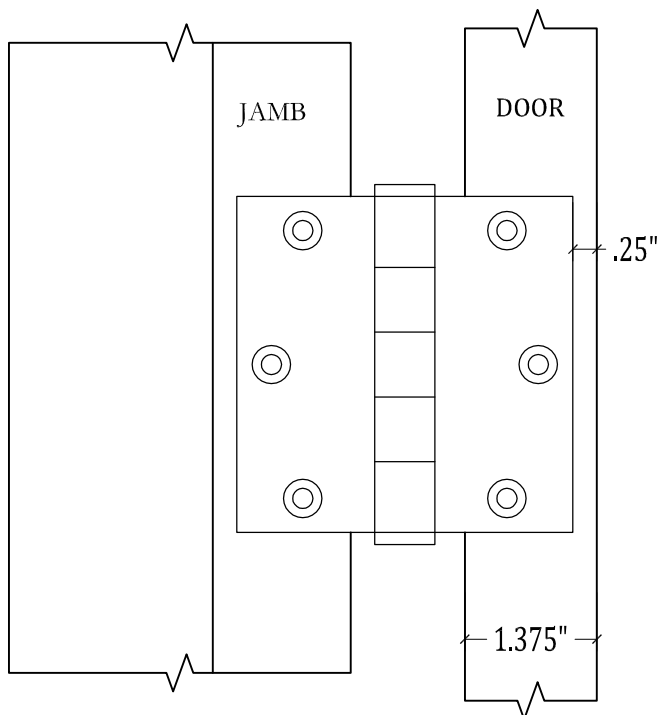
DETAIL:

UPSTATE STANDARD BACKSET FOR
4"X4" HINGE ON 1.75" THICK DOOR



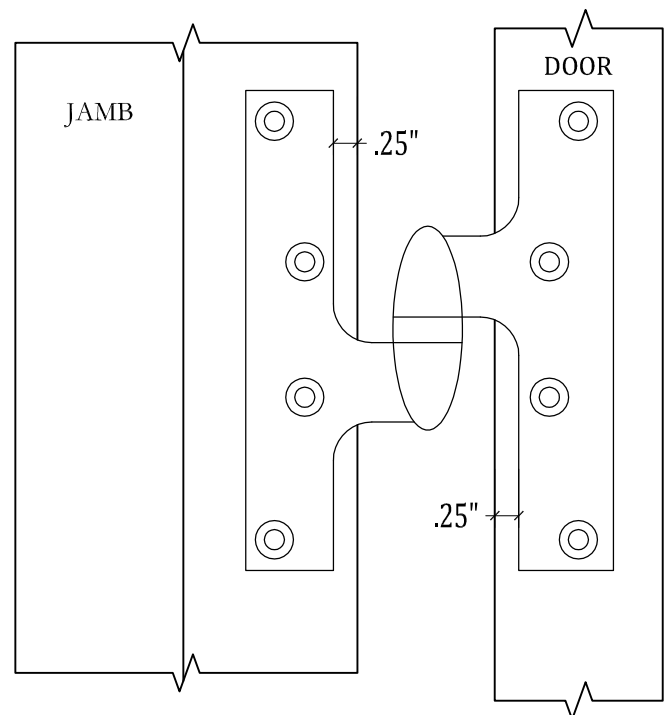
DETAIL:

UPSTATE STANDARD BACKSET FOR
4.5"X4.5" HINGE ON 2.25" THICK DOOR



DETAIL:

UPSTATE STANDARD BACKSET FOR
3.5"X3.5" HINGE ON 1.375" THICK DOOR



DETAIL:

UPSTATE STANDARD
BACKSET FOR OLIVE KNUCKLE HINGES

For more assistance, please contact one of our customer service representatives
1-800-570-8283 sales@upstatedoor.com www.upstatedoor.com

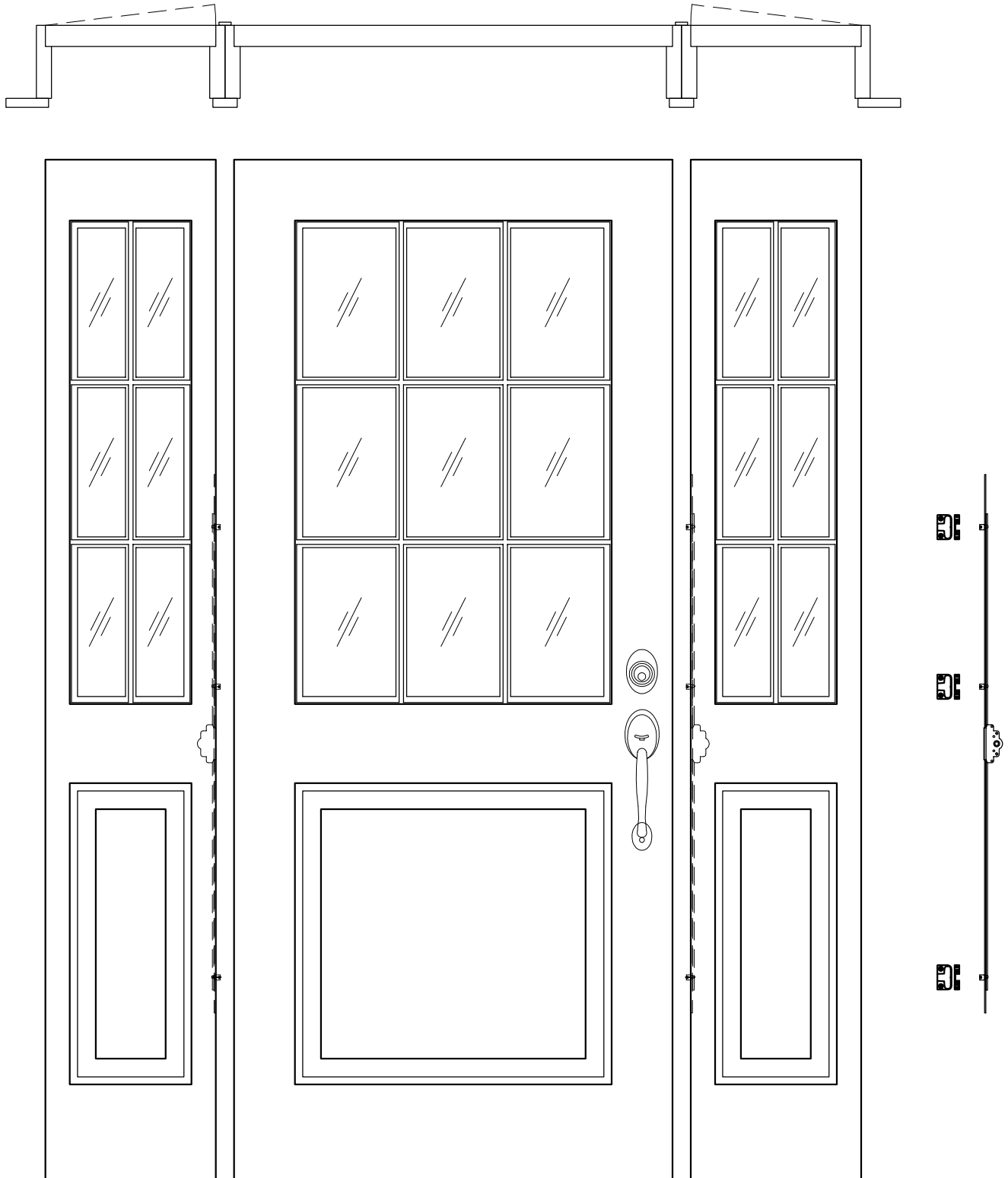


UPSTATE DOOR®

FINE DOOR SOLUTIONS... ONE SOURCE

Operable Sidelites

Scale: 1" = 1'-0"



OPERABLE SIDELITES

For more assistance, please contact one of our customer service representatives
1-800-570-8283 sales@upstatedoor.com www.upstatedoor.com

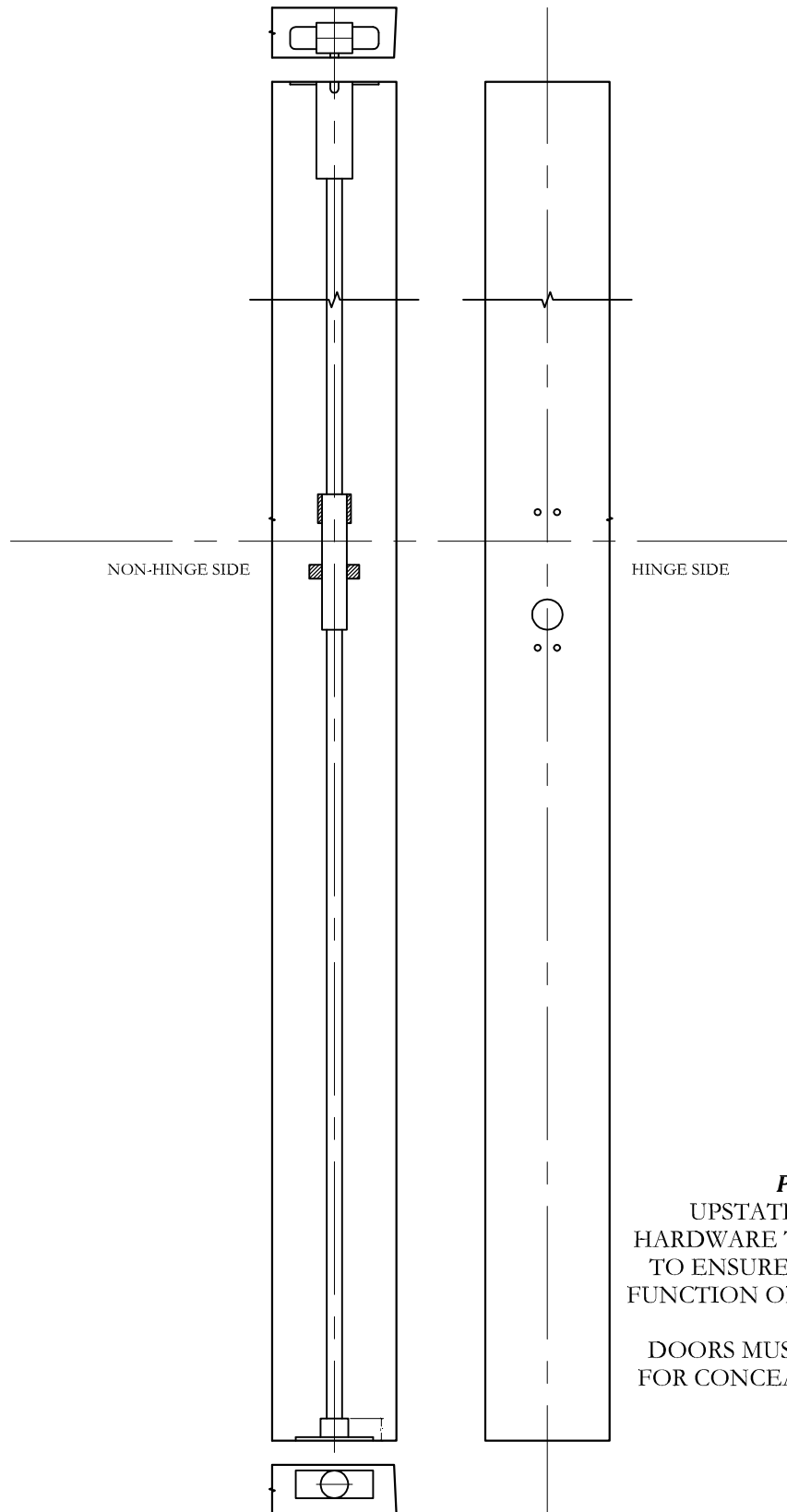


UPSTATE DOOR

FINE DOOR SOLUTIONS... ONE SOURCE

Panic Hardware Options

Scale: 1:8



PANIC HARDWARE:

UPSTATE REQUIRES ANY PANIC HARDWARE TO BE SHIPPED TO UPSTATE TO ENSURE PROPER MACHINING AND FUNCTION OF HARDWARE WITHIN DOOR

DOORS MUST BE AT LEAST 2.25" THICK FOR CONCEALED VERTICAL ROD PANIC DEVICES

For more assistance, please contact one of our customer service representatives

1-800-570-8283

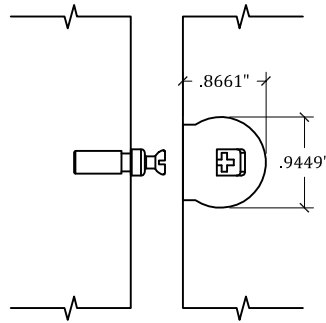
sales@upstatedoor.com

www.upstatedoor.com

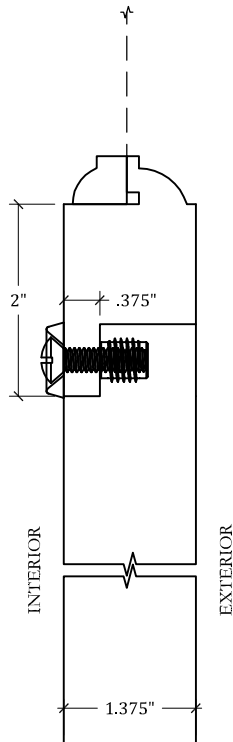


UPSTATE DOOR
FINE DOOR SOLUTIONS... ONE SOURCE

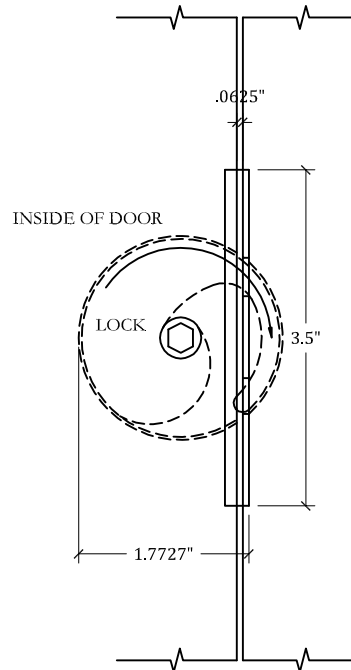
Screen/Storm
Scale: HALF



DETAIL: RAFIX HARDWARE



DETAIL: TRADITIONAL SCREEN/STORM HARDWARE



DETAIL: GIRO HARDWARE